

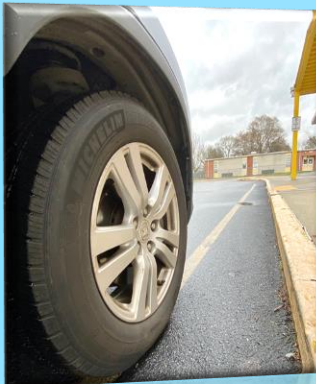


# WCPS Curbside Meals: New Schedule

Wicomico County Public Schools supports students' health and readiness to learn by providing free meals to all WCPS students. Due to the increased number of meals being served in schools, Wicomico is adjusting the days and times for curbside meal bundles effective **Wednesday, April 7**.



Meals will be available for pickup **Monday-Wednesday-Friday\*** each week. On Mondays and Wednesdays, meal bundles will contain two days' worth of meals so children have meals ready for the following day. (\*Exception: Week of June 1-4, meal bundles available Tuesday-Wednesday-Friday)



## New Curbside Meal Times (Monday-Wednesday-Friday):

- 8:30-10 a.m. at middle schools and high schools (not Choices)
- 9 a.m.-12 p.m. at **Mardela Middle and High** (for MMHS, Northwestern)
- 11 a.m.-12:30 p.m. at elementary schools, **Pittsville School**  
(not at WELC campus, Northwestern, Prince Street)

### Menus:

Click on "School Meal Menus" at [www.wcboe.org](http://www.wcboe.org)

## Community Locations

Due to the distance from the nearest school, meal bundles are also available Monday-Wednesday-Friday at:

**Westside Volunteer Fire Dept.** Bivalve  
10:45-11:45 a.m.

**Asbury United Methodist Church**  
Sharptown  
11 a.m.-12:30 p.m.



# Paquetes de Comidas de WCPS: Nuevo Horario

Las Escuelas Públicas del Condado de Wicomico apoyan la salud de los estudiantes y los ayudan a estar listos para aprender proveyendo comidas gratis a todos los estudiantes de WCPS. Debido al incremento en el número de comidas servidas en las escuelas, Wicomico está ajustando los días y horas para distribución de paquetes de comida a partir del Miércoles 7 de Abril.



Los paquetes de comidas estarán disponibles para recogerse los Lunes-Miércoles-Viernes\* de cada semana. Los paquetes de comidas del Lunes y Miércoles contendrán comida para dos días, así los niños tendrán comida lista para el siguiente día.

(\*Excepto: Semana del 1-4 de Junio, paquetes de comidas estarán disponibles Martes-Miércoles-Viernes)



## Nuevo horario de distribución de paquetes de Comidas:

- 8:30-10 a.m. en escuelas secundarias y preparatorias (no Choices)
- 9 a.m.-12 p.m. en secundaria y preparatoria Mardela (para MMHS, Northwestern)
- 11 a.m.-12:30 p.m. en escuelas elementales, escuela Pittsville  
(no en el campus WELC, Northwestern, Prince Street)

### Menús:

De clic en "School Meal Menus" en [www.wcboe.org](http://www.wcboe.org)

## Lugares en la Comunidad

Debido a la distancia hasta la escuela más cercana, los paquetes de comidas también están disponibles los Lunes, Miércoles y Viernes en:

**Westside Volunteer Fire Dept.** Bivalve  
10:45-11:45 a.m.

**Iglesia Metodista Asbury United** Sharptown  
11 a.m.-12:30 p.m.



# WCPS Repa Koub Lekol: Ore Nouvo

Lekòl Piblik Distri Wicomico sipòte sante elèv nou yo ak preparasyon yo pou aprann nan bay manje gratis pou tout elèv WCPS yo. Akòz ogmantasyon kantite manje ke yo te sèvi nan lekòl yo, Distri Wicomico ap ajiste jou ak lè pou pakèt manje nan koub yo epi ki ap efikas depi Mèkredi 7 Avril.



Manje yo ap disponib pou ranmase Lendi-Mèkredi-Vandredi \* chak semèn. Lendi ak Mèkredi, pakèt manje yo ap gen de jou manje anplis pou timoun yo ka gen plis manje pare pou jou kap vini nan demen yan. (\*Eksepsyon: Semèn 1-4 Jen, pakèt manje ap disponib Madi-Mèkredi-Vandredi)



### Nouvo Ore Repa Pou Koub Lekol yo (Lendi-Mèkredi-Vandredi):

- 8:30-10 a.m. nan Lekol Mwayen ak (Lise) high schools (pa Choices)
- 9 a.m.-12 p.m. nan Lekol Mwayen Mardela ak High (pou MMHS, Northwestern)
- 11 a.m.-12:30 p.m. nan Lekol Elemante yo, Lekol Pittsville  
(pa nan Kanpis WELC, Northwestern, Prince Street)

**Meni yo:**  
Klike sou "School Meal Menus" nan [www.wcboe.org](http://www.wcboe.org)

**Lokasyon Kominote yo**

Akòz distans ki soti nan lekòl ki pi pre yan pakèt manje yo ap disponib tou le Lendi-Mèkredi-Vandredi nan:

**Westside Volonte Dept. Ponpye**  
Bivalve  
10:45-11:45 a.m.

**Asbury United Legliz Metodis**  
Sharptown  
11 a.m.-12:30 p.m.